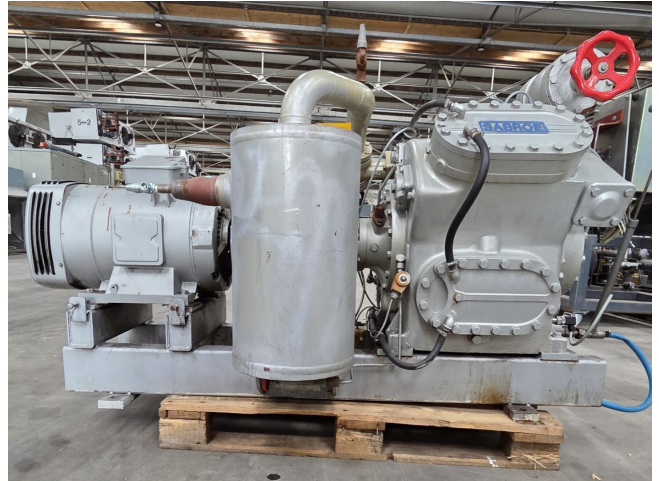


Sabroe SMC 104 S HP

Specifications

Marka	Sabroe
Typ	SMC 104 S HP
Czynnik chłodzący	NH 3 (ammonia)
kW at +10°C/+40°C	285,6
kW at 0°C/+40°C	186,5
kW at -5°C/+40°C	147,2
kW at -10°C/+40°C	113,8
Rozładunek	✓
Kontrolka wydajności	✓
Podstawa na stalowej ramie	✓
Okno widokowe	✓
Zawór elektromagnetyczny	✓
Panel kontrolny	✓
m ³ / h	220
Rozmiary	2100x1000x1150 mm (LxWxH)
Stock	1



Description

Used Sabroe SMC 104 S HP

Used Sabroe SMC 104 S HP R717 (Ammonia) reciprocating compressor on a steel base frame. Complete with a Leroy Somer P 200 LP electric motor - 50 Hz - 45 kW - 1465 RPM, Sabroe OVUR 3206 D oil separator with a volume of 39 liter and an Unisab 3 controller. The compressor has a displacement of 220 m³/h.

*Why choose for HOSBV? We are not only the largest used refrigeration specialist in Europe, but also, we deliver all equipment including an extensive test, warranty and industrial cleaning. *If requested we are happy to arrange your logistics.

